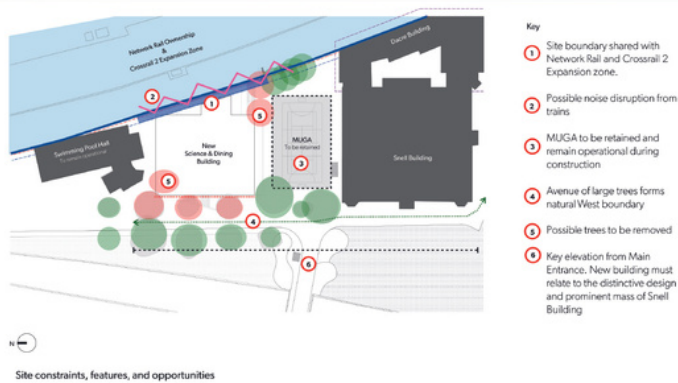




A NEW SCIENCE AND DINING BUILDING

We are developing proposals for a new Science and Dining Building. The site is marked by the red outline, and will replace an existing block containing classrooms and staff accommodation dating from the 1950s and 1980s.



View from southern boundary of School site



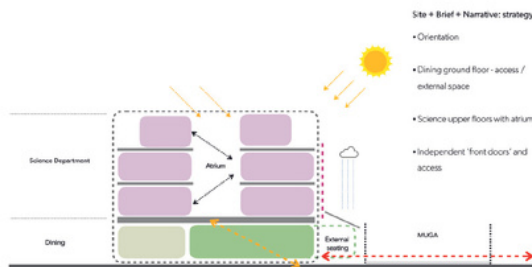
View from entrance and western boundary of School site



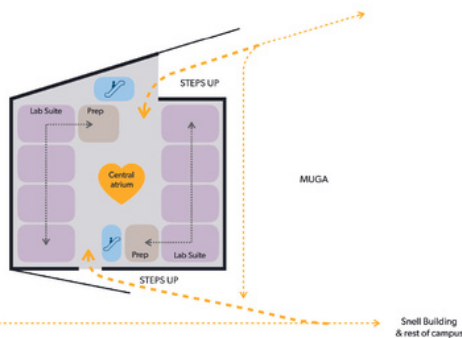
MODERNISING OUR FACILITIES

The School is seeking to develop a high-quality new building that achieves the following:

- Upgraded and modernised learning facilities for Science and Technology
- Increased capacity for dining and teaching space
- Improved accessibility and functionality of our facilities
- Additional gathering and assembly space
- Reduced energy use and improved sustainability



Concept section illustrating separation between dining and teaching, the central atrium, and stacking of teaching accommodation.



Concept plan illustrating main entrances, circulation and adjacencies to teaching level

The proposals will deliver:

- A new central atrium to form the heart of the building and maximise daylight
- A new dining space on the ground floor with external seating
- Modern Science laboratories, Technology and tutorial rooms across the three upper floors
- Lab clusters to improve accessibility and movement around the building
- A BREEAM excellent standard certification building
- An environmentally friendly energy and water strategy



Emanuel School

LEARNING, DINING AND SOCIALISING

We are upgrading our learning facilities to include:

- 15 laboratories supported by 2 prep rooms and 8 tutorial rooms
- New spaces for computing and robotics
- A new 340 seat dining hall, a central atrium, and landscaped outside spaces for pupils to socialise all year round



**Proposed
ground
floor plan**



**Proposed
second
floor plan**

(layout repeated on
first and third floors)



Emanuel School

NEW SCIENCE AND DINING BUILDING

The new Science and Dining Building will reflect the character and appearance of the existing School buildings and estate, including the Snell Building.



The new building, as seen from the lawn in front of the Snell Building, to the right of the Spencer Park entrance



The new building, as seen from the eastern boundary of the School site, with the existing Multi-Use Games Area in front



Emanuel School

VIEWS OF THE NEW BUILDING



Below are a set of images providing different viewpoints of the new building. The key includes:



1

View from the School entrance across the bridge at Spencer Park



2

View of the north-west of the building



3

View from the southern boundary of the School site across the playing fields



4

View from Spencer Park with Clapham Junction rail disaster memorial in the foreground



LANDSCAPING PLAN

As part of the development, there will be an extensive programme of planting and landscaping, including:

- Existing tree cover maintained along the site boundaries
- Additional mature tree planting
- Green roof on third floor terrace
- Extensive new landscaping and planting to encourage biodiversity



New planting options



We will use a wide range of plants and shrubs surrounding the building and beneath trees to improve landscaping and increase biodiversity.